



KWM's IronMan
Next Generation
Smart Machine
Named Top 5
Product for 2010!



IRON MAN

5 1/2" Fascia Gutter



The **IronMan Next Generation Smart Machine** is an available option on all IronMan machines. The touch screen allows you to automatically control product length, add for miters, if applicable, and keep a total of the daily material ran and the total footage. Password protected.



**3 YEAR WARRANTY
ON PARTS & LABOR**

Polyurethane Drive Train

- Eliminates the need to load coil prior to transportation (less material waste)
- Eliminates slippage from cold weather and condensation
- Rollforms all standard metals with minimal or no adjustment

Electrical and Control System

- Push button entry and exit end controls with safety wiring and "jog" feature
- 3/4 HP, 110 volt, single phase motor, 13.6 ampere

Structural Steel Frame

- Welded tubular frame

Modular Turnstile Upright System



**PROUDLY
MANUFACTURED
IN THE USA**

KWM
Gutterman^{INC}

www.kwmgutterman.com
Toll-free (888) 729-4290



IRON MAN

5 1/2" Fascia Gutter

Power

3/4 HP, 110 volt, single phase,
13.6 ampere, totally enclosed
fan cooled (T.E.F.C.) motor

Dimensions

Length – 132 1/2" (336.55 cm)
Height – 48" (122.0 cm)
Width – 24" (61.0 cm)

Weight

Approximately 1,300 lbs. (589.7 kg)

Drive

Powered polyurethane drive rollers
via chains and sprockets

Shear

Front pull guillotine

Speed

Approximately 35 feet per minute

Controls

Push button entry and exit end controls
with "jog" feature

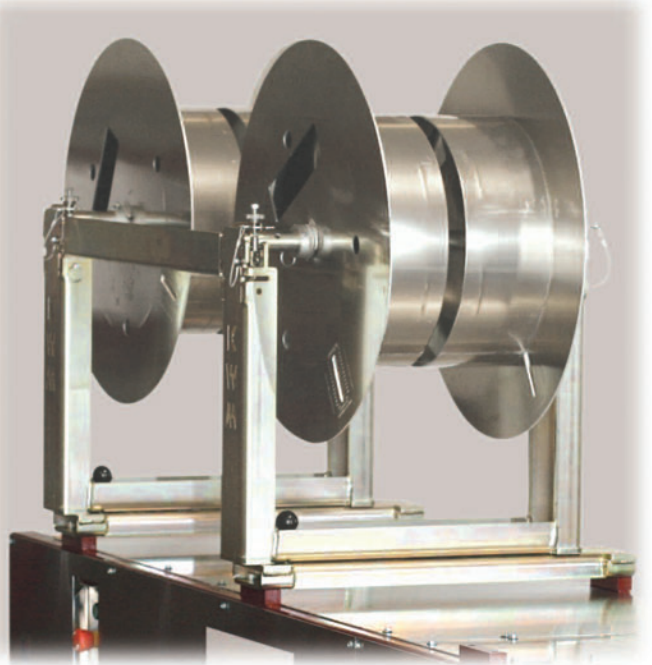
Recommended Materials

14" and 15" wide

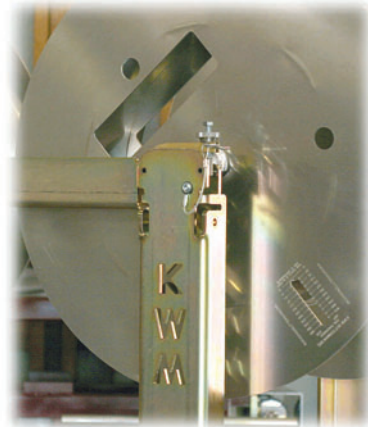
Material	Maximum Gauge
Aluminum	.032
Copper	16 oz. – 20 oz. 3/4 hard

Options

- Smart Machine (automated length control)
- Machine mount cradles
- Fixed upright system
- Additional runout support stands
- CE Certified wiring
- Additional turnstiles
- Additional spools
- Flange assembly for roofing



Quick release turnstile and transfer bars



Innovative upright design reduces friction at upright wear point.

 **KWM**[®]
Gutterman^{INC.}

795 South Larkin Avenue
Rockdale, Illinois 60436

Phone (815) 725-9205 • Fax (815) 725-4429

Toll-free (888) 729-4290

E-mail sales@kwmgutterman.com

www.kwmgutterman.com